

Product Data

High Performance Concrete Repair & Rebuild Composite

Belzona® 4111 (Magma-Quartz) is a multi-purpose repair composite for the resurfacing, rebuilding, and protection of concrete and stonework.

This versatile material can also be used for grouting and bonding offering outstanding chemical, abrasion, and impact resistance.

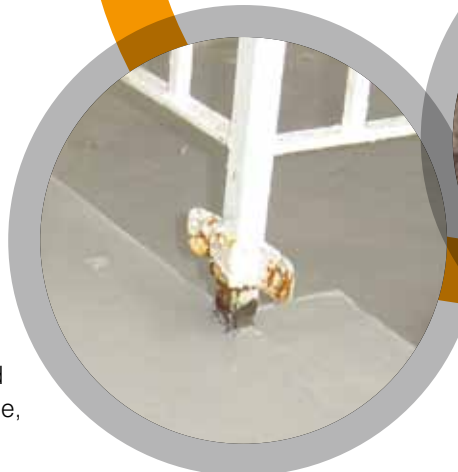
Belzona® 4111 (Magma-Quartz) will:

- Simplify maintenance procedures
- Cut downtime
- Avoid costly structural rebuild
- Reduce safety hazards
- Provide long term protection

Belzona® 4111 (Magma-Quartz) is ideally suited for repairs to horizontal surfaces subject to abrasion impact and vibration but may also be applied to vertical substrates up to 6mm in thickness. It will bond strongly to most surfaces including concrete, brick, marble, stone, steel, and other metal substrates.

Belzona® 4111

Magma-Quartz



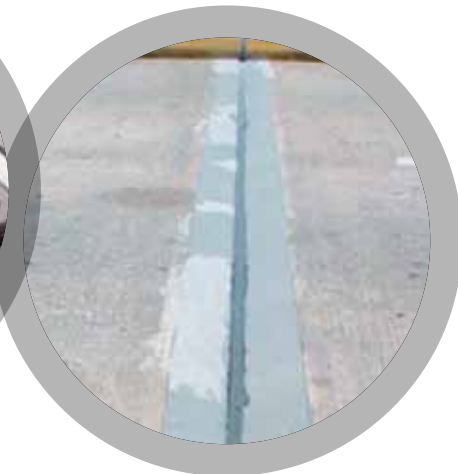
Loose Railings



Steps



Channels and Gratings



Expansion Joints

Applications for Belzona® 4111 (Magma-Quartz) include:

- Floors
- Ramps
- Stairways
- Walkways
- Chemical storage areas
- Loading docks
- Machinery/production areas
- Aisles
- Expansion joints
- Loose railings

www.belzona.com

Belzona provides the solution to your repair and maintenance needs.


BELZONA®
Repair • Protect • Improve

Belzona® 4111 (Magma-Quartz) is:

Simple

- Easily mixed and applied
- No specialist tools required
- Mix and use only what is required

Safe

- No solvent vapors
- No fire risk
- No tainting of foodstuffs
- Meets U.S.D.A (United States Dept. of Agriculture) requirements for incidental food contact

Versatile

- Can be finished to a feather edge
- Resists pedestrian traffic in 4 hours
- Can be tinted to match original substrate
- Pourable grout or non-flowing screed consistency
- Bonds to metallic and non-metallic surfaces

Effective

- High mechanical strength
- No shrinkage irrespective of the thickness applied
- Resistant to all environmental attack
- Outstanding chemical resistance
- Withstands frost and sub zero service conditions
- Does not absorb water or chemicals

Belzona® 4111
Magma-Quartz



Floor problem areas

For more information, please contact your local Belzona representative.



QUALITY PRODUCTS - TECHNICAL SUPPORT

The Belzona product range is manufactured through stringent quality and environmental control guidelines complying with the internationally recognized requirements of **ISO 9001:2008** and **ISO 14001:2004**. Belzona has a global distribution network of over 140 Distributors operating in 120 countries. Local support is provided by trained Technical Consultants who will diagnose the problem, recommend the solution, and provide 24-hour on-site application supervision.

Copyright© 2008 by Belzona International, Ltd. All rights reserved. No part of this work may be reproduced or used in any form or by any means - graphic, electronic, or mechanical including photocopying, recording, taping, or information storage and retrieval systems - without written permission of Belzona International, Ltd. Belzona® is a registered trademark.

www.belzona.com



ISO 9001:2008
Q 09335
ISO 14001:2004
EMS 509612

Europe & Africa
Belzona Polymers Ltd.
Harrogate, UK
t: +44 1423 567641
f: +44 1423 505967
e: belzona@belzona.co.uk

The Americas
Belzona Inc.
Miami, FL USA
t: +1 (305) 594-4994
f: +1 (305) 599-1140
e: belzona@belzona.com

Asia & Oceania
Belzona Asia Pacific
Chonburi, Thailand
t: +66 38 378099
f: +66 38 378098
e: belzona@belzona.cn

China
Belzona Hong Kong
Hong Kong, China
t: +852 3101 7461
f: +852 3101 7530
e: belzona@belzona.hk


BELZONA®
Repair • Protect • Improve